

The Journey of a Flushed WET WIPE



AT THE STORE

Most wet wipes contain **plastic**, but this isn't clearly labelled on the package!



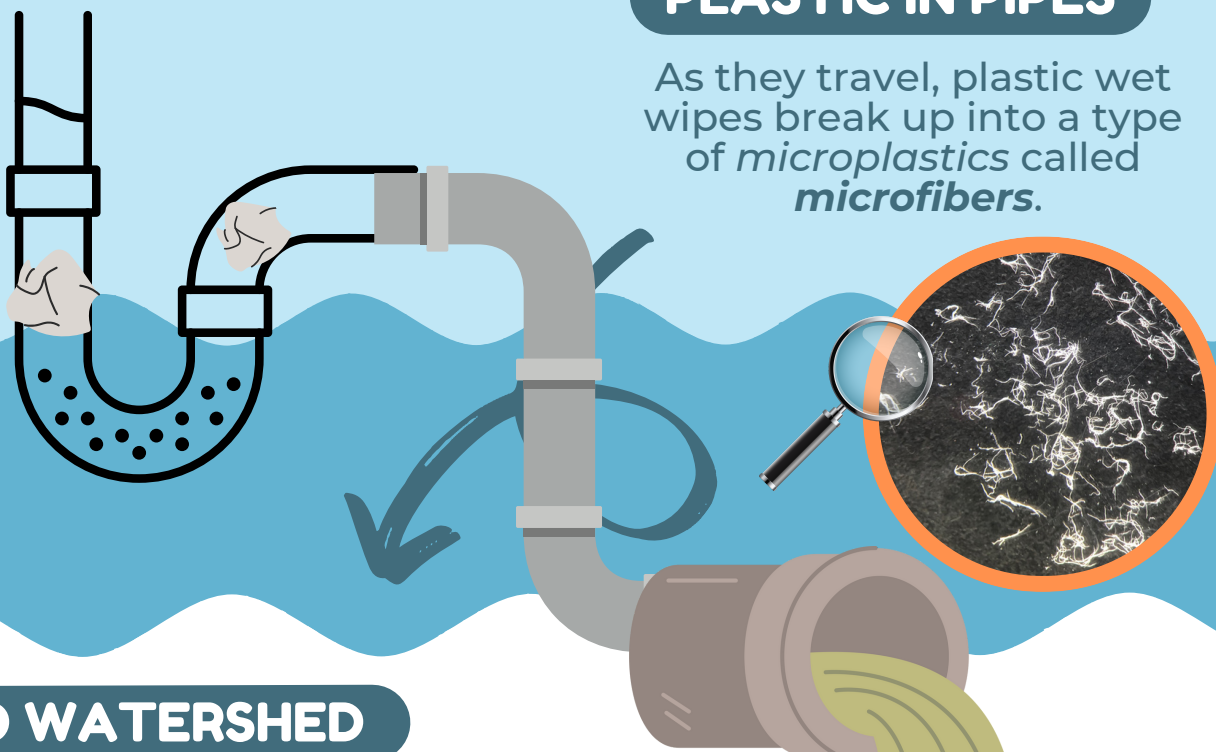
DOWN THE TOILET

Plastic wet wipes should never be flushed! When they are, they enter the sewage system.



PLASTIC IN PIPES

As they travel, plastic wet wipes break up into a type of *microplastics* called **microfibers**.



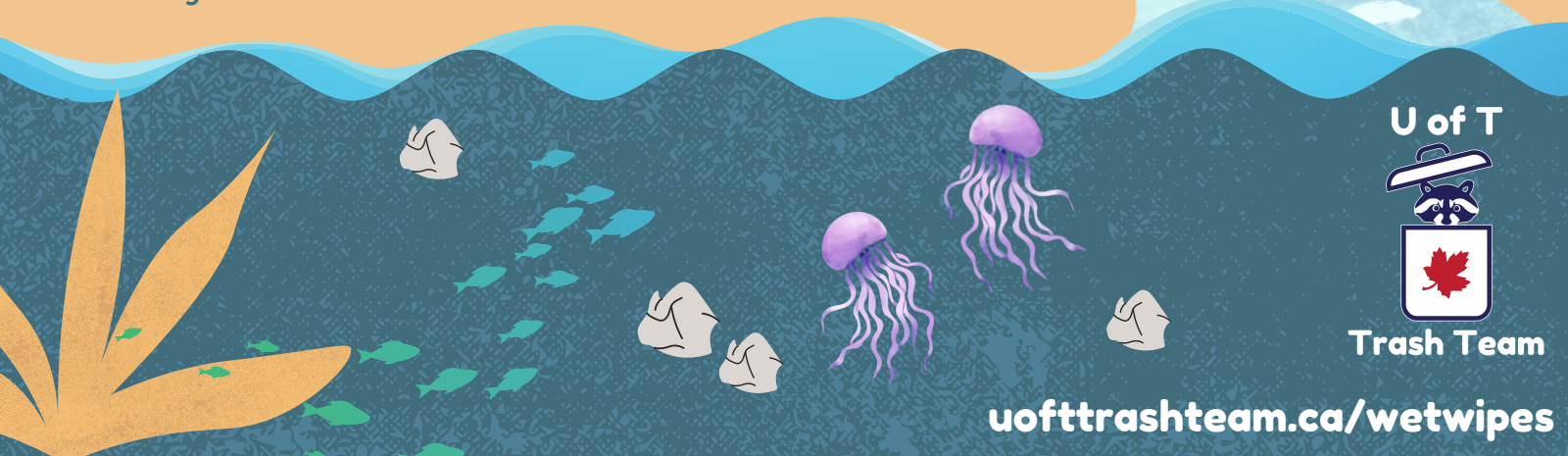
INTO WATERSHED

During high rainfall, **combined sewage overflow** dumps all sewage into rivers or streams - including any flushed nonorganic materials.



IN THE OCEAN

Plastic wet wipes are either caught in the riparian zones of rivers or streams, or transported as microfibers to nearby lakes and oceans.



U of T



Trash Team

uofttrashteam.ca/wetwipes